



MONTHLY MEMBERSHIP PROGRESS REPORT

District 14 G

Results as of: 02/28/2018

GMT: CINDY GREGG

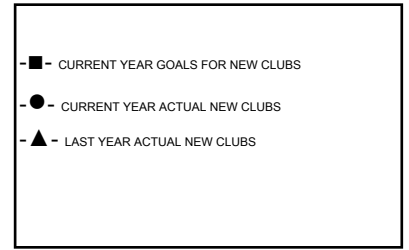
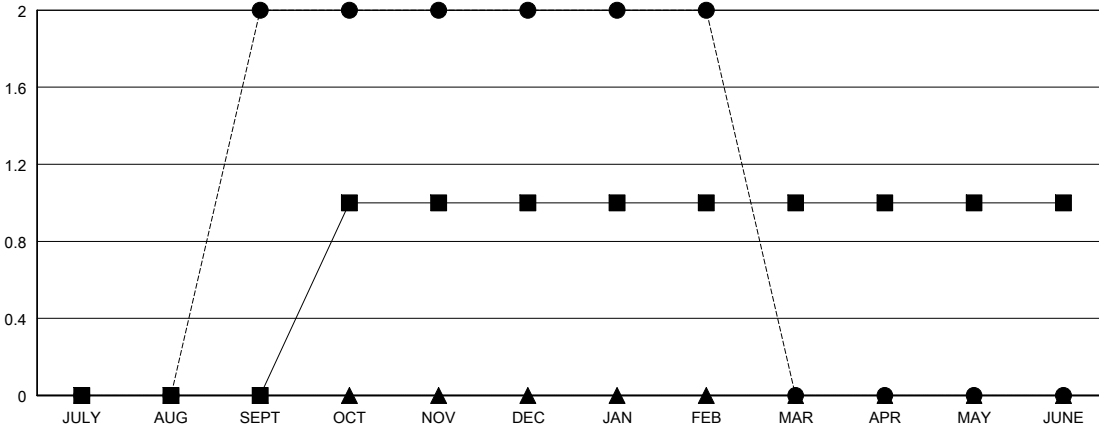
LOCATION PENNSYLVANIA

GMT CA

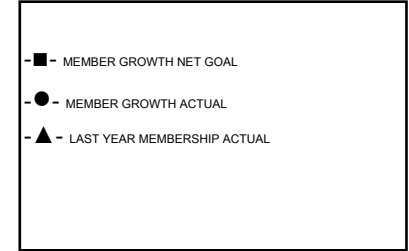
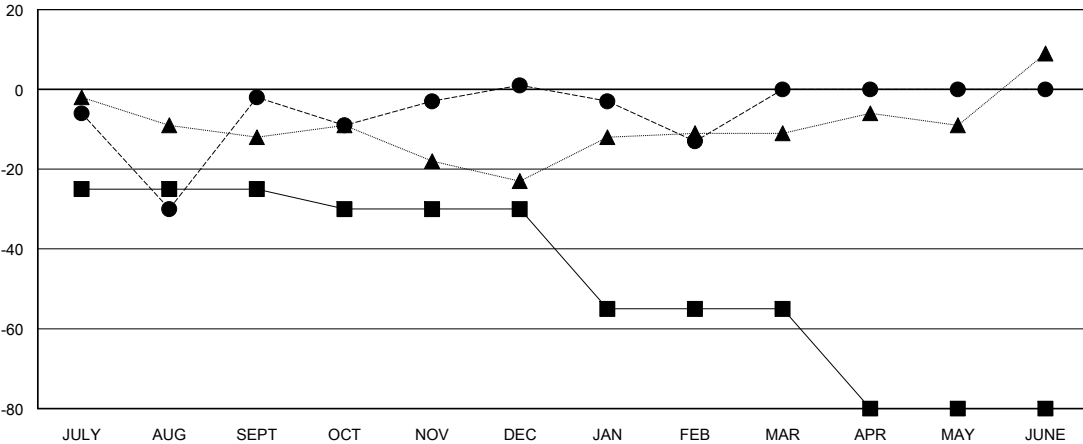
Clubs			
RESULTS FOR 2017-2018			
QUARTER	NEW CLUB GOAL	NEW CLUBS	DROPPED CLUBS
JULY/AUG/SEPT	0	2	0
OCT/NOV/DEC	1	0	0
JAN/FEB/MAR	0	0	0
APR/MAY/JUNE	0	0	0

Members			
RESULTS FOR 2017-2018			
QUARTER	MEMBER GROWTH NET GOAL	MEMBER GROWTH ACTUAL	DROPPED MEMBERS ACTUAL (including transfers)
JULY/AUG/SEPT	-25	73	74
OCT/NOV/DEC	-5	38	33
JAN/FEB/MAR	-25	37	48
APR/MAY/JUNE	-25	0	0

GOALS AND ACTUAL NEW CLUBS CUMULATIVE



GOALS AND ACTUAL MEMBERS CUMULATIVE



DROPPED CLUBS: 0

33 CLUBS OF 59 ADDED 1 OR MORE NEW MEMBERS

GENDER DISTRIBUTION	
MALE	1,298 (76.94%)
FEMALE	389 (23.06%)
Women Percentage Fiscal Year Goal: 22%	

DROPPED MEMBERS	
DECEASED	24
CLUB CANCELLED	0
OTHER	131
TOTAL	155

[CLICK HERE FOR CUMULATIVE MEMBERSHIP DATA](#)

TOTAL FAMILY UNIT MEMBERS	335
FAMILY MEMBERS PAYING HALF DUES	171